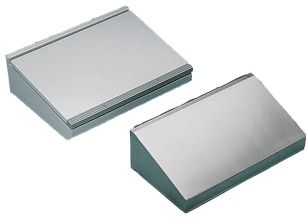


PROLINE-PC CONSOLET COMPARTMENT PC/SY, FITS 800MM, BRUSHED, SS304

CATALOG NUMBER

PCDS8SS



Provides sealed compartment for keyboard storage or protection for controls. Hinged door allows easy access to compartment. Door support holds door open at 90 degrees. Two quarter-turn integral latches are incorporated into the front edge of steel compartment doors. Foam-in-place gasket on door and gasket around open rear surface extend the UL and CSA rating to the consolet compartment interior. Ground studs and mounting hardware are provided. The Flush Keylock (PSTLO) is available as an accessory.

FEATURES

Hinged door for easy access to compartment

Door support holds door open at 90 degrees

Two quarter-turn integral latches are incorporated into the front edge of steel compartment doors

PRODUCT ATTRIBUTES

Article Number: 35469

Height: 6.89 in

Width: 31.17 in

Depth: 17.46 in

Material: Stainless Steel 304

Finish: Brushed

Color: Unpainted

Thickness: 14 ga

Clear Space: 28.54 in

Weight: 44 lb

WARNING

nVent products shall be installed and used only as indicated in nVent's product instruction sheets and training materials. Instruction sheets are available at www.nvent.com and from your nVent customer service representative. Improper installation, misuse, misapplication or other failure to completely follow nVent's instructions and warnings may cause product malfunction, property damage, serious bodily injury and death and/or void your warranty.



Our powerful portfolio of brands:
nVent.com CADDY ERICO HOFFMAN RAYCHEM SCHROFF
TRACER